

Floodplain Resilience: A tool to support multi-objective decision making

Julie Morse and Kris Johnson, The Nature Conservancy



Floodplains by Design

• REDUCING RISK, RESTORING RIVERS •



Floodplains by Design

• REDUCING RISK, RESTORING RIVERS •



Sustainable Lands Strategy

Net gain for farms and fish



SLS Executive Committee:

*Stillaguamish & Tulalip Tribes
Snohomish Conservation District
State: PSP, DOE, WDFW, Conservation Com.
Feds: NOAA, USDA/NRCS*

*Snohomish County
Agriculture Advisory Board
Futurewise, Pilchuk Audubon, TNC and
other Environmental NGO's*

Challenges to Integrated Floodplain Management



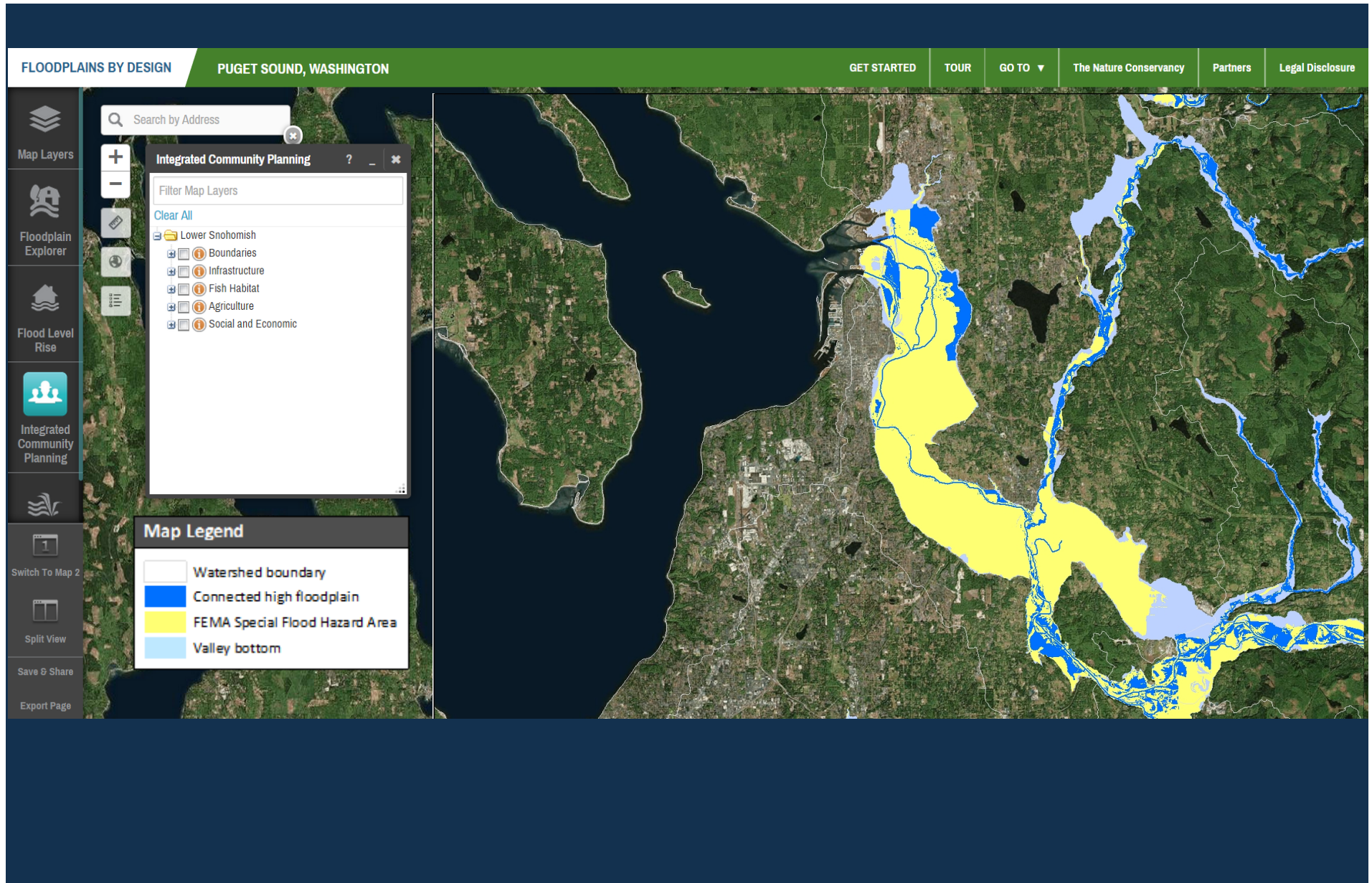
Geography: everything lands in the floodplain

- Floodplain predominately owned by farmers
- Priority habitat for ESA listed species
- Development pressure
- Critical need for flood control



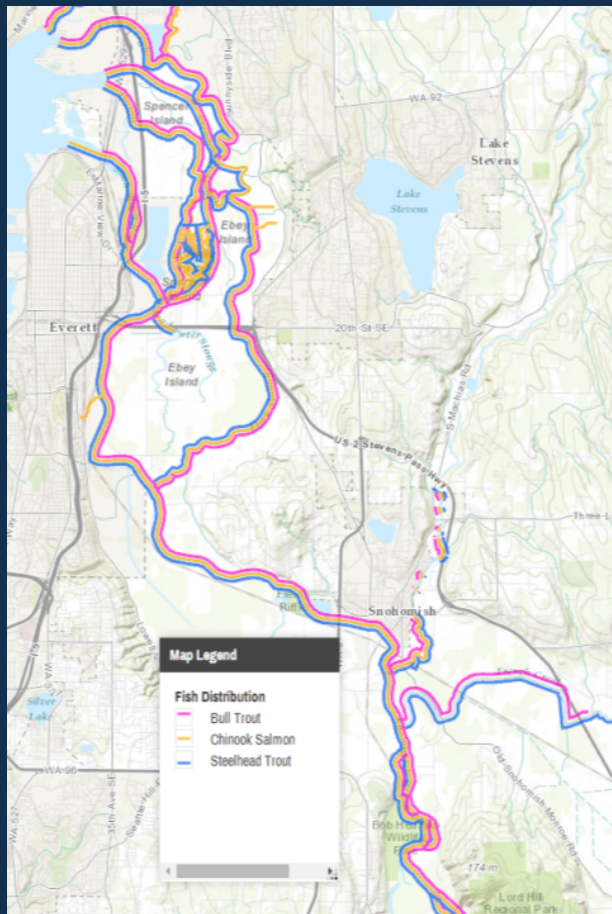
Coastal Resilience - Online Mapping Platform

Integrated Community Planning App

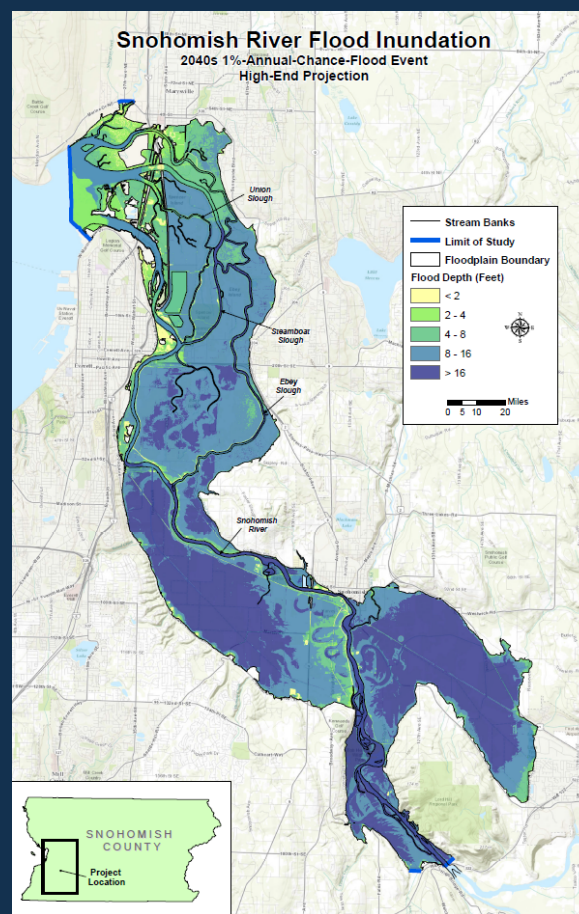


Crafting an Integrated Vision

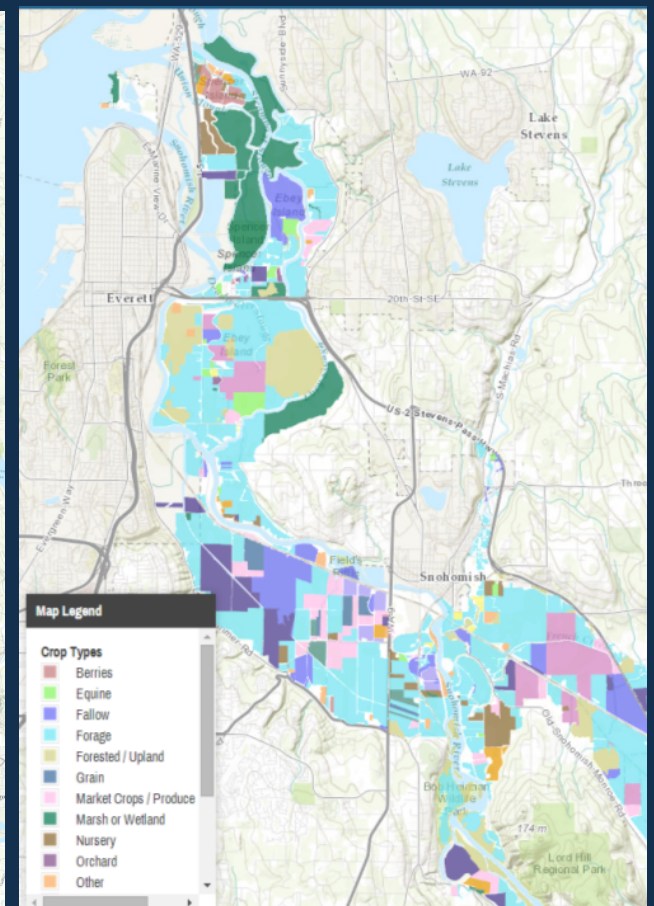
Fish



Flood



Farm



Coastal Resilience - Online Mapping Platform

Catalyze Conversations • Assess Risk • Identify Solutions



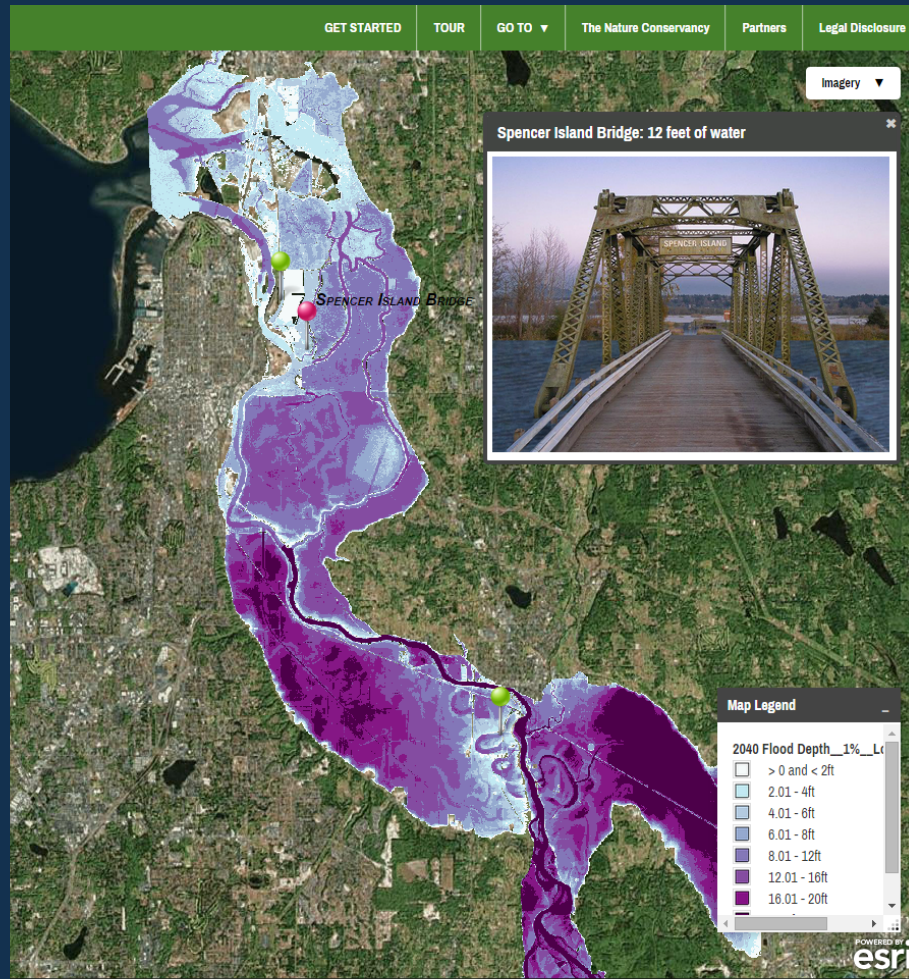
The image cannot be displayed. Your computer may not have enough memory to open the image, or the image may have been corrupted. Restart your computer, and then open the file again. If the red x still appears, you may have to delete the image and then insert it again.

www.maps.coastalresilience.org/pugetsound

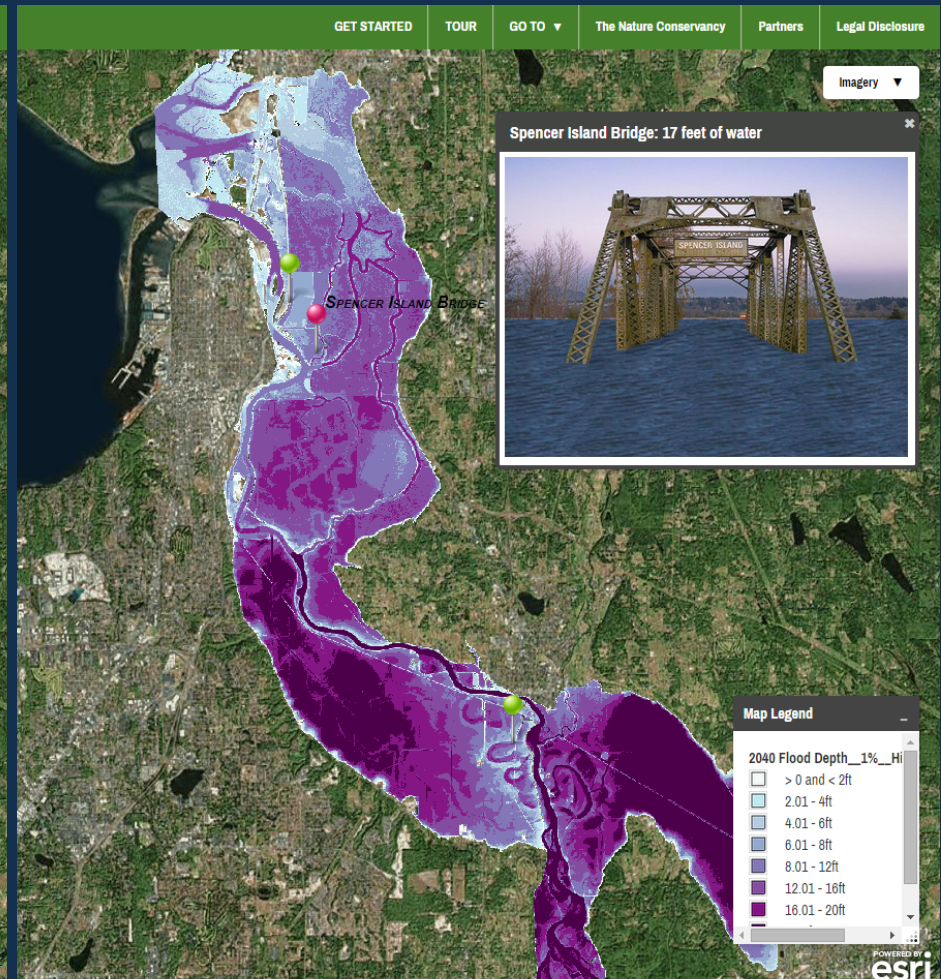
Decision Support Tool

• *Assess Risk*

2040 Low Scenario



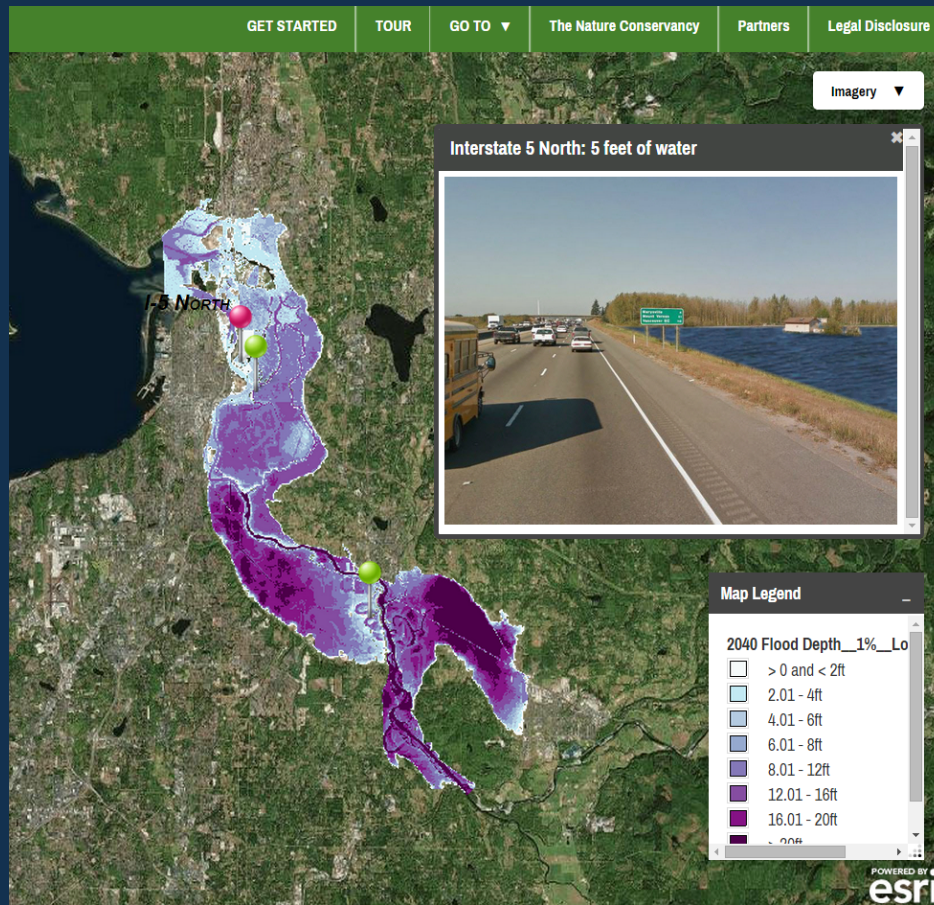
2040 High Scenario



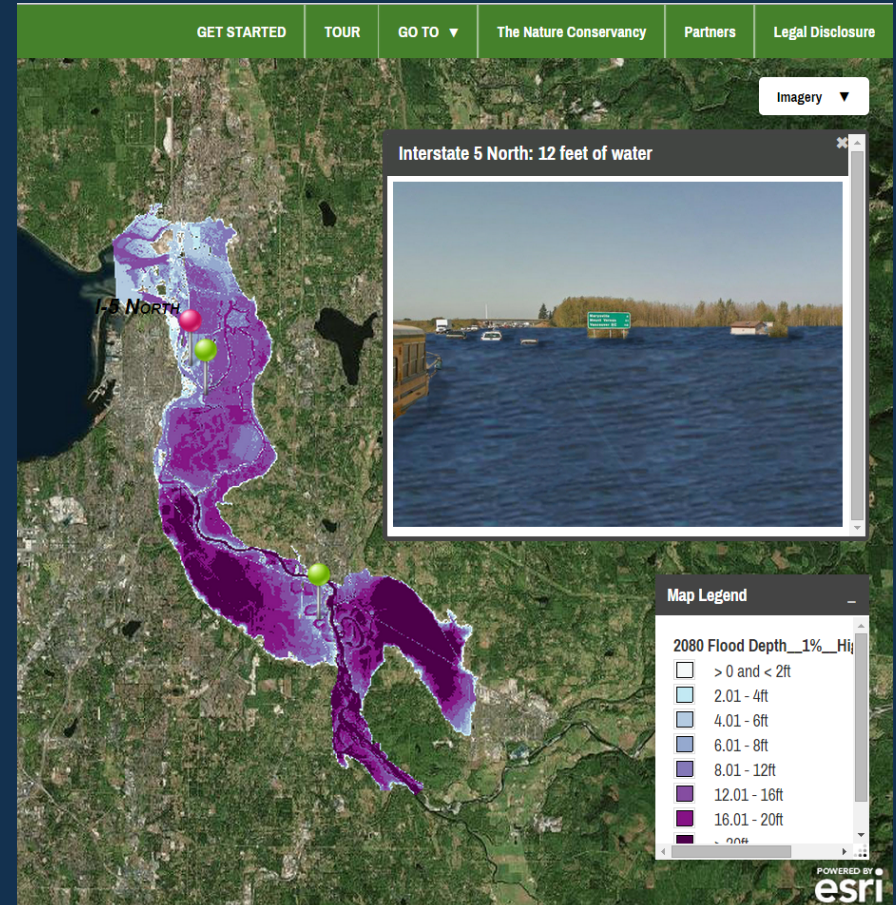
Decision Support Tool

▪ Assess Risk

2040 Low Scenario

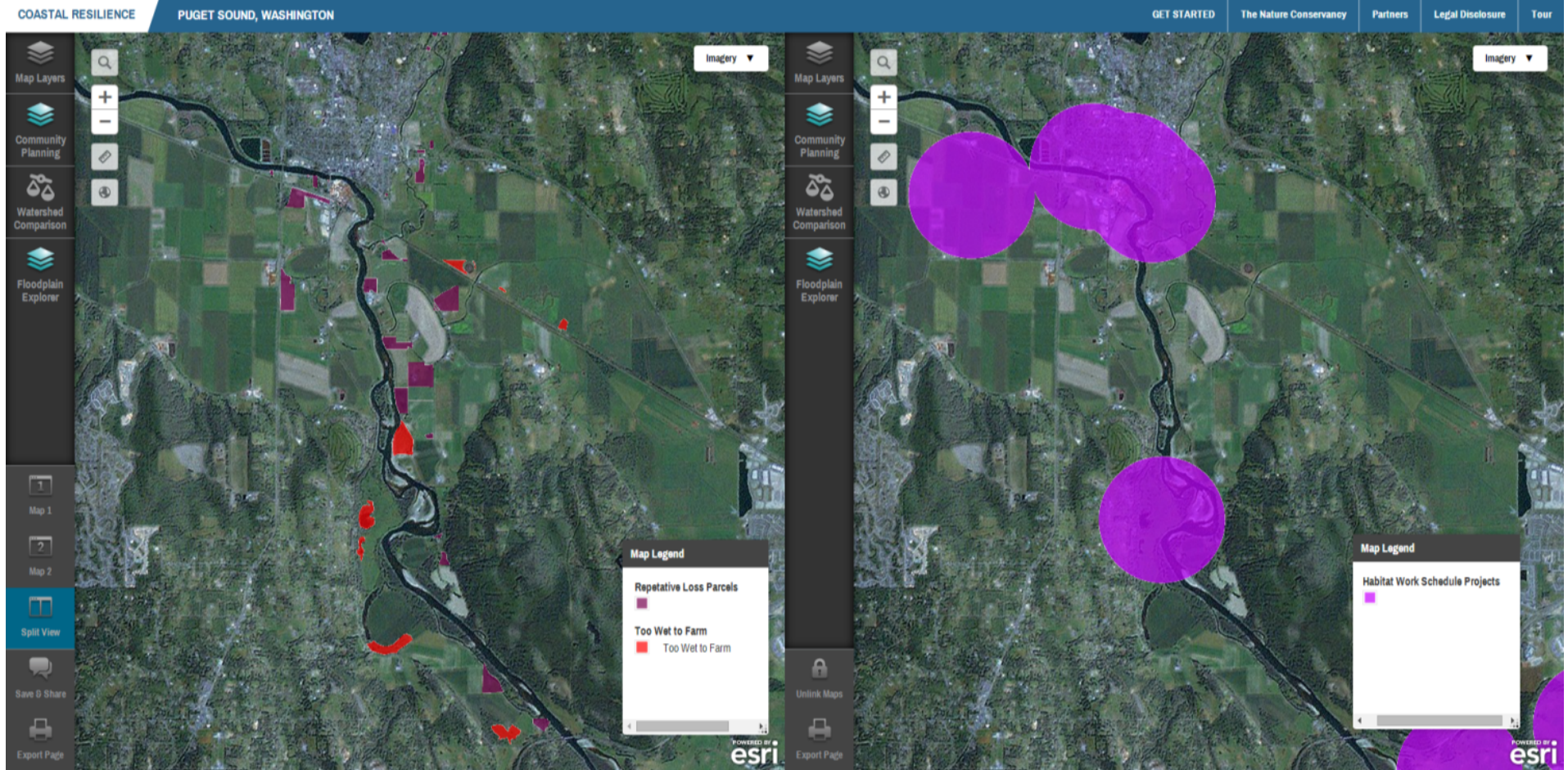


2080 High Scenario



Decision Support Tool

Catalyze Conversations



Coastal Resilience - Ventura County, CA

The Oxnard City Council recently placed a moratorium on new coastal power plants, based on data that predicts that the power plants would be under water by 2020, if not sooner.



Snohomish Decision Support



Next Steps

- Need to level the playing field with better agriculture data, subsidence priority
- Incorporate climate adaptation into project designs
- Bring implementation funding to projects that have multiple benefits - flood control, climate adaptation, salmon recovery, and community benefits



Comments or Questions: jmorse@tnc.org